



# Creative & Customized LED Display

## LED Floor Tiles

Pixel Pitch (mm) : 2.5 / 2.604 / 2.976 / 3.91 / 4.81 / 5.2 / 6.25

Cabinet Size (mm) : 500\*500 / 500\*1,000

## Cabinet Structure

LED floor tiles are available in die-cast aluminum, aluminum plate, and sheet metal cabinet options. With a standard 250×250 mm module size, they ensure flexible configuration and easy installation to meet diverse project needs.



500×500mm

Die-Cast Aluminum Cabinet



500×500mm

Aluminum Plate Cabinet



500×500mm

Indoor Sheet Metal Cabinet



500×1,000mm

Indoor Sheet Metal Cabinet



900×(300+150)×88mm

Staircase LED Cabinet

## High Load Capacity

Engineered with advanced mechanics, the LED floor tiles can withstand an impressive load of up to 3 tons, making them suitable for heavy-duty applications without compromising stability.



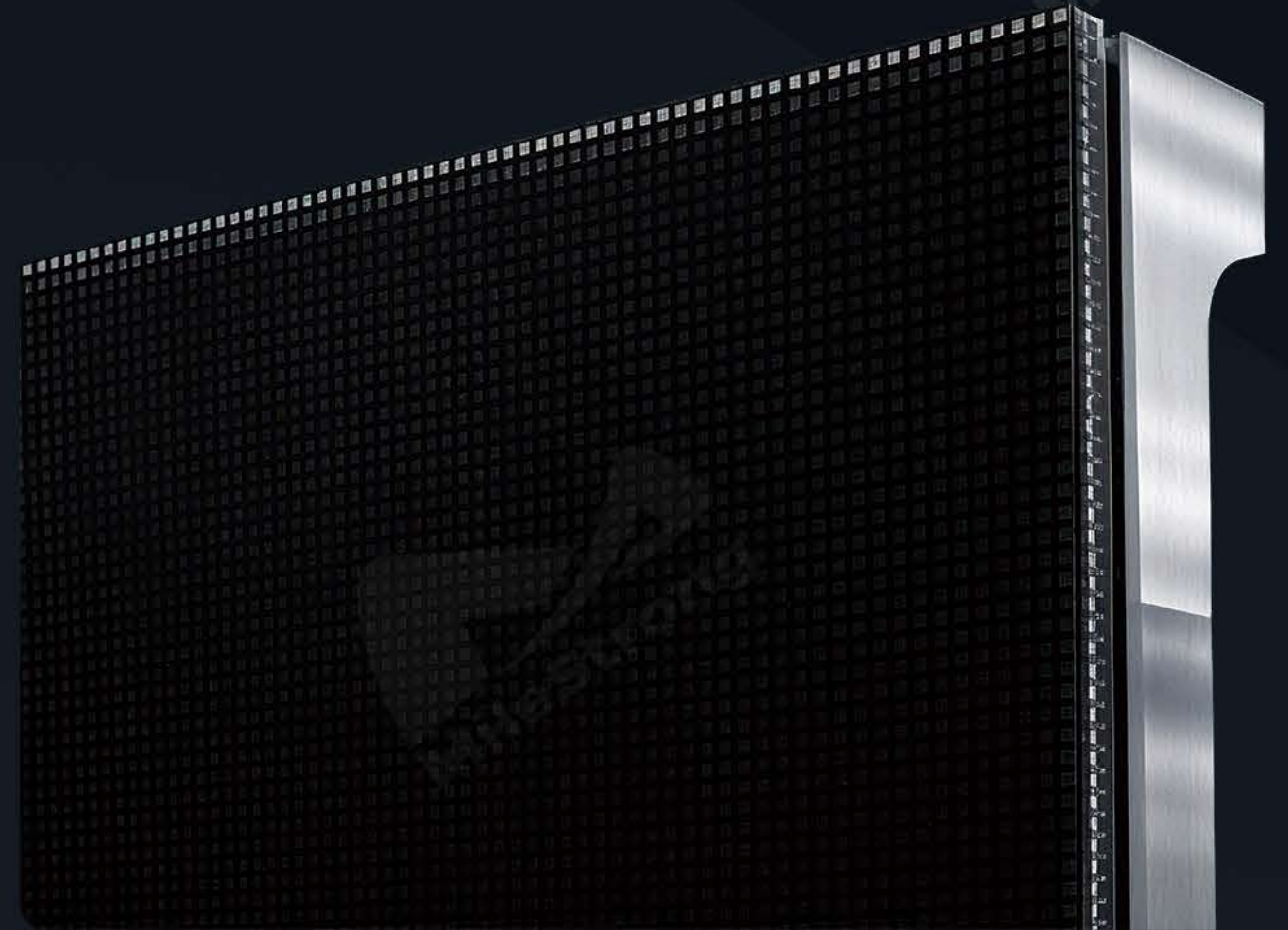
## Precision Sensing

Equipped with built-in optical sensing chips, the floor tiles capture movement with ultra-fast precision. With a response time as low as 50 microseconds, interaction is instant and seamless.



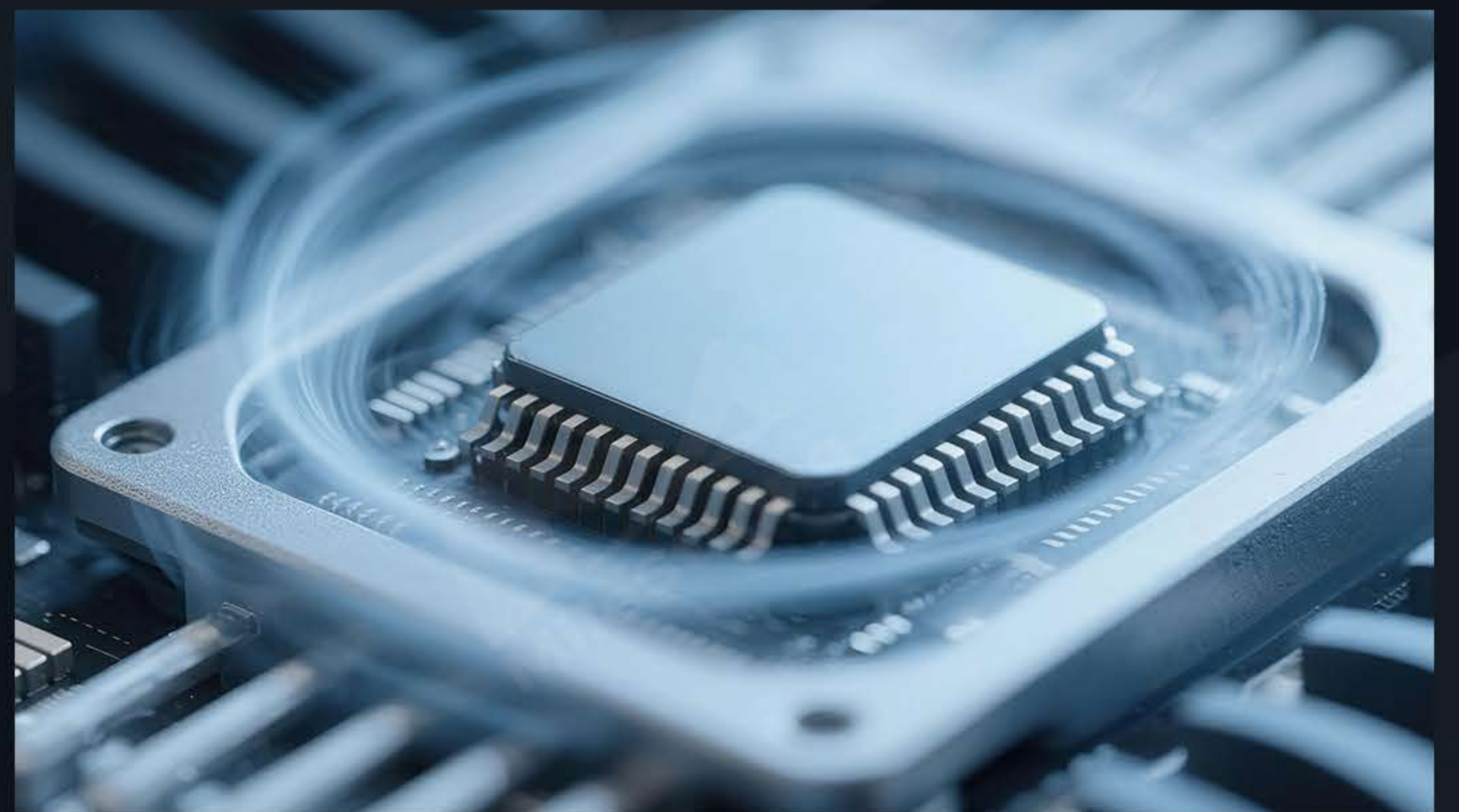
## Durability & Safety

Crafted from A+ grade imported polymer PC materials, the surface mask provides exceptional wear resistance, flexibility, and durability. It resists high temperatures, extreme cold, and fire hazards, while the customizable anti-slip design adapts to different environments for maximum safety.



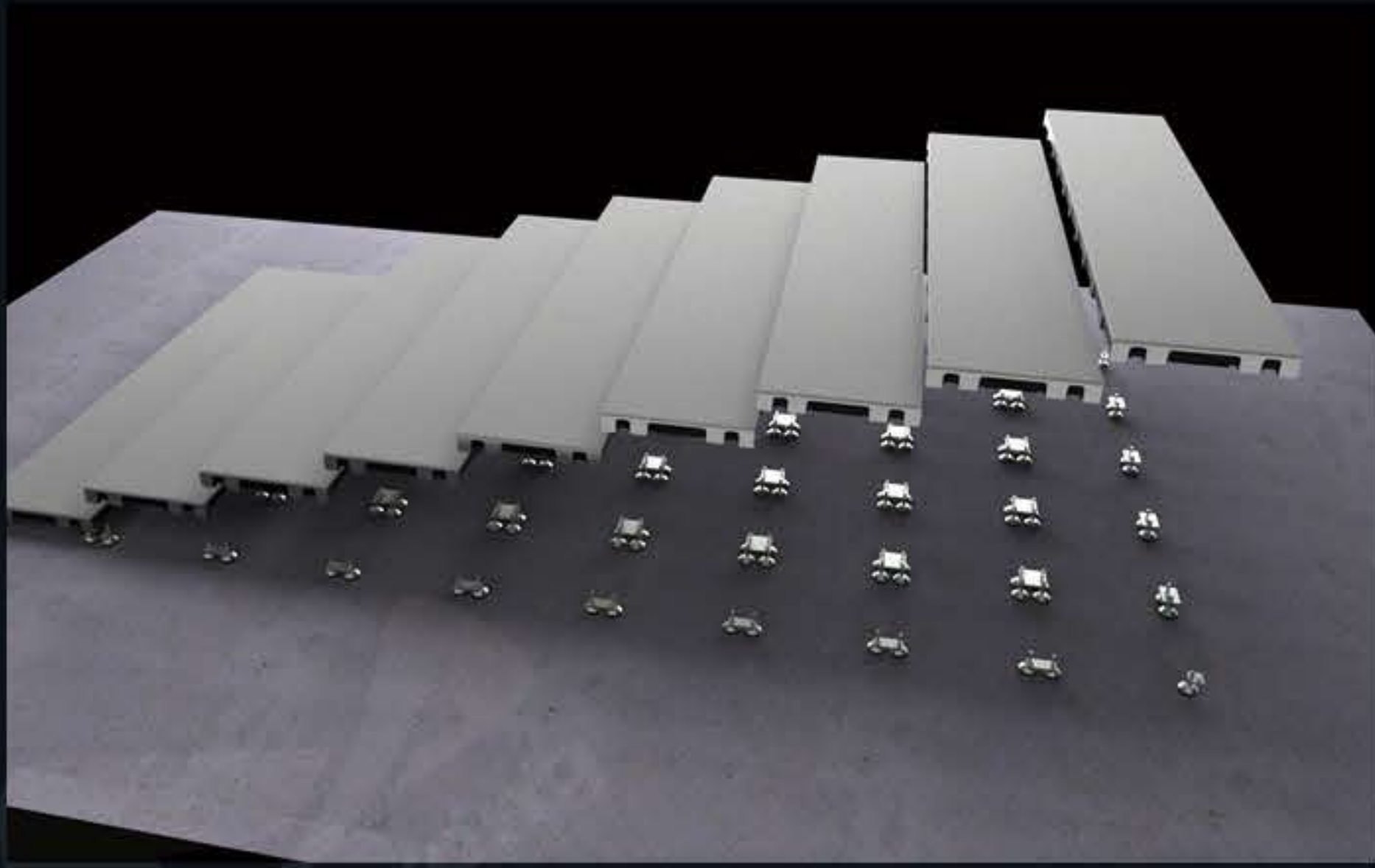
## Silent Heat Dissipation

The unique cooling system ensures efficient heat conduction with minimal noise. This silent yet powerful heat dissipation mechanism provides 24/7 stable operation.



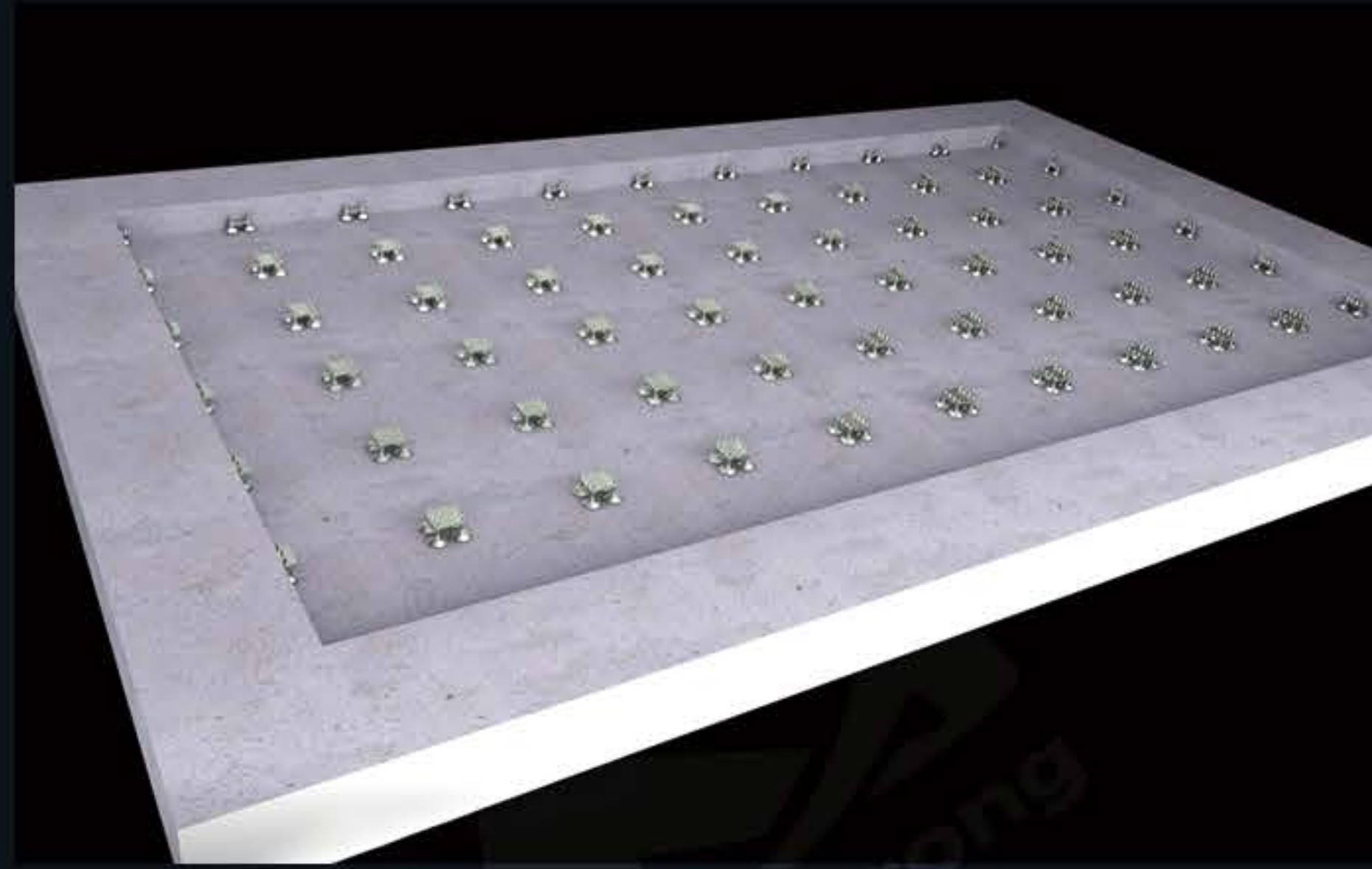
## Installation Methods

Surface-mounted, steel frame, and embedded options provide flexible solutions for various indoor environments.



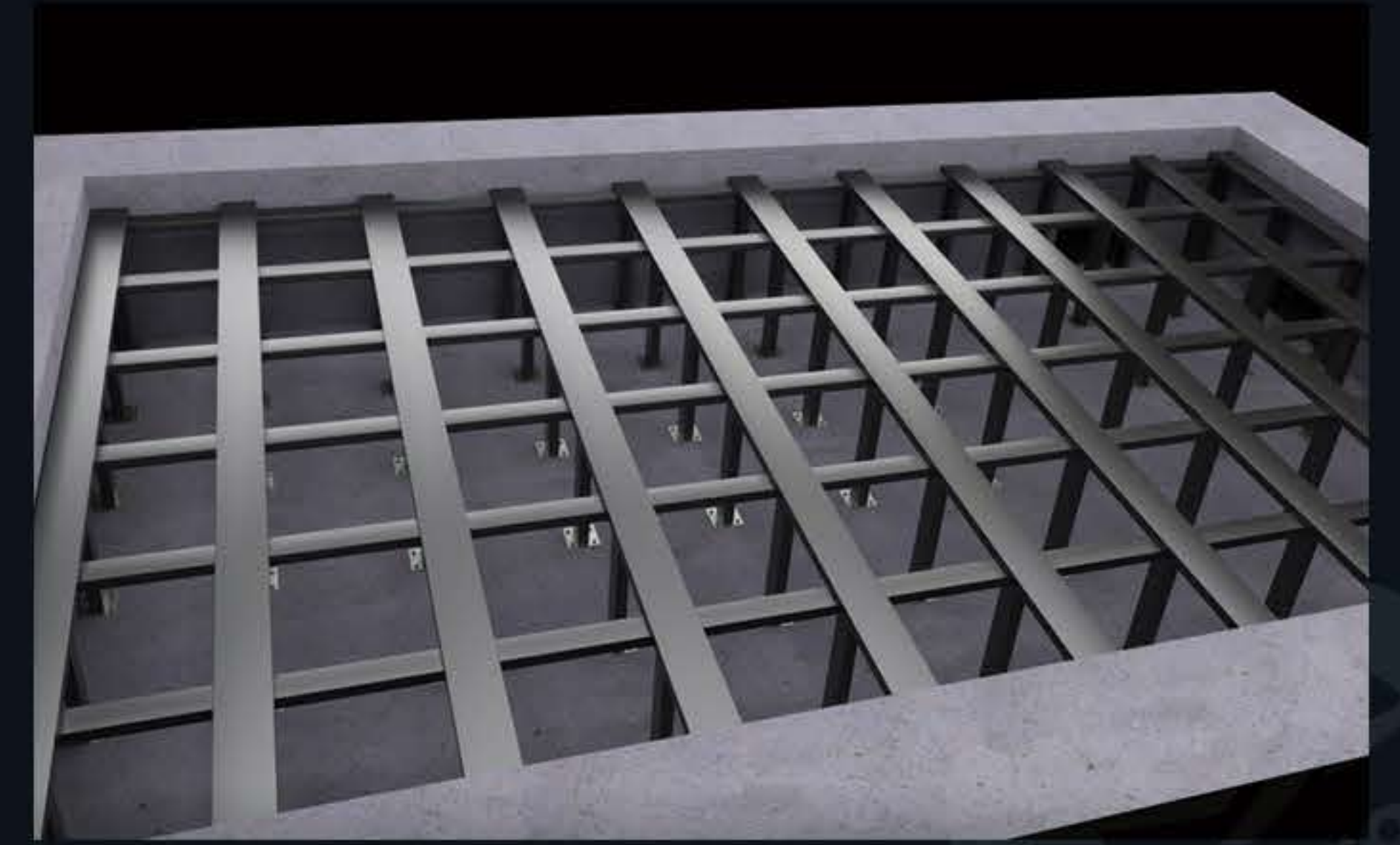
**Surface-Mounted Installation**

Directly installed on the ground, with the screen body raised above floor level. Mainly used indoors when the floor cannot be recessed.



**Steel Frame Installation**

Mounted on a welded steel frame on the ground or in a recessed pit. Commonly chosen for deep foundations or for ventilation, drainage, and dehumidification needs.



**Embedded Installation**

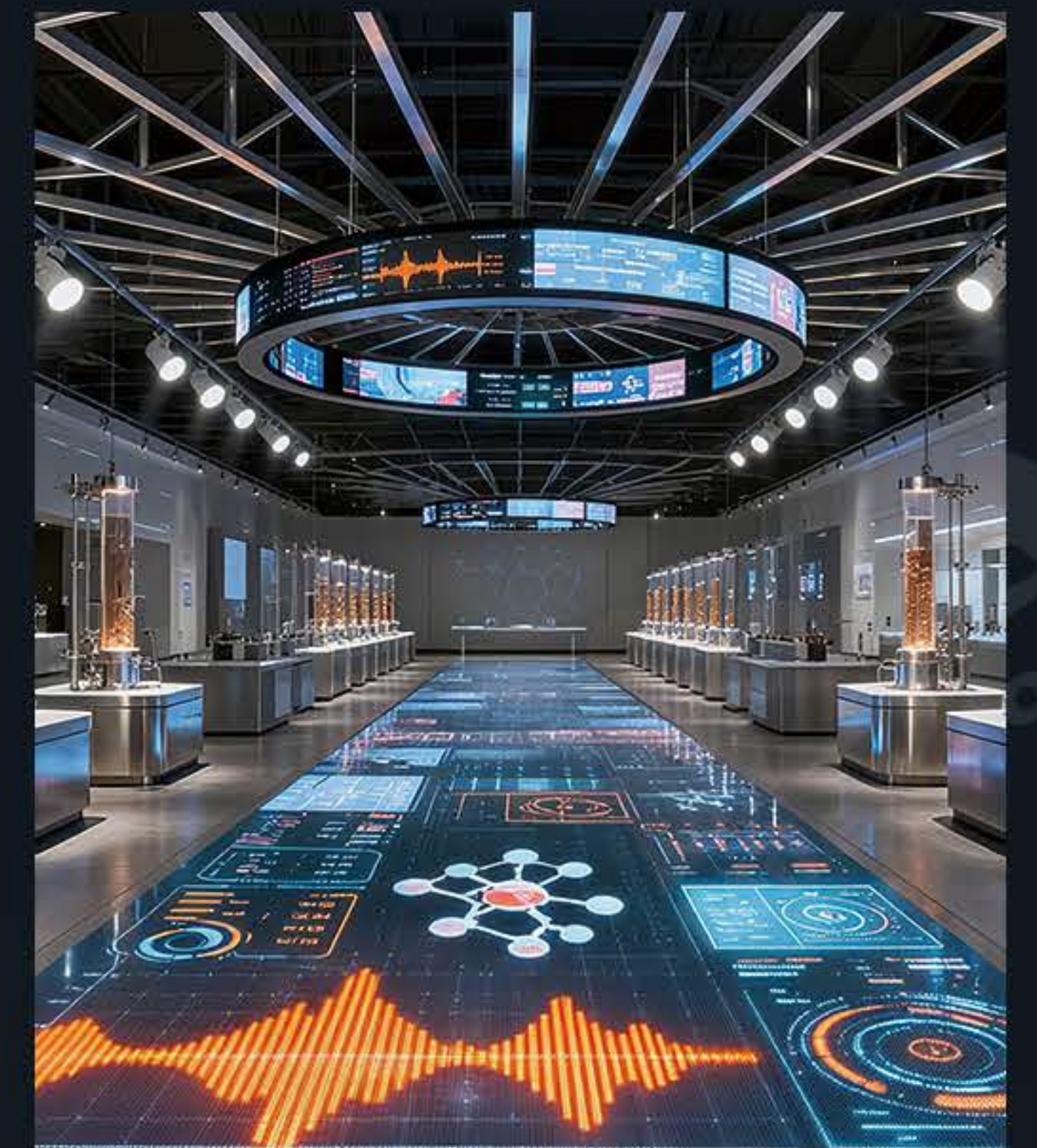
Installed in a recessed pit so the screen surface is flush with the floor. This method is preferred for seamless walking and natural integration with the environment.

## Ultra-Fast Interaction

Designed for dynamic experiences, the LED floor tiles support multi-channel, point-to-point, multi-touch interaction with no limits on the number of interaction points. Performance remains smooth and responsive at all times.

## Application Scenarios

LED floor tiles are widely used in exhibitions, stage performances, immersive experience halls, shopping malls, theme parks, and commercial spaces. Their durability and interactive features make them an ideal choice for both entertainment and professional environments.



## Parameters

Items	F25	F26	F29	F39	F48	F52	F62
Pixel Pitch (mm)	2.5	2.604	2.976	3.91	4.81	5.2	6.25
Module Resolution (W×H)	100×100	96×96	84×84	64×64	52×52	48×48	40×40
Module Size (mm)	250×250						
Pixel Density (pixels/m <sup>2</sup> )	160,000	147,456	112,896	65,536	43,264	36,864	25,600
Peak Power Consumption (W/m <sup>2</sup> )	800						
Cabinet Size (mm)	500×500 / 500×1,000						
Cabinet Weight (kg/m <sup>2</sup> )	44						
Refresh Rate (Hz)	3,840						
Operating Temperature (°C)	-20 ~ 65						
Protection Level	Front IP54, Back IP43						

\* The specifications are for reference only. Actual parameters may vary depending on the specific model or contractual agreement.



*Bring your ideas into reality*

### **MileStrong Headquarters & Showroom**

4/F, Building B15, Phase II, Xincheng Chuangzhi Industrial Park, No. 456 Heping Road, Furong District, Changsha, Hunan, China

### **Shenzhen MileStrong Conventional Display Division**

Building 4, Yinjin Technology Industrial Park, Fengjing South Road, Hewan Community, Matian Subdistrict, Guangming District, Shenzhen, Guangdong, China

### **Shenzhen MileStrong XR/Immersive Display Division**

3/F, Building 5, Xinlianhe Industrial Park, Bao'an District, Shenzhen, Guangdong, China

### **Shenzhen MileStrong Transparent Display Division**

3/F, Tianyou Building, Yuekang Road, Bao'an District, Shenzhen, Guangdong, China

**Shenzhen Milestrong Technology Co., Ltd.**



Website



WhatsApp



WeChat



TikTok



YouTube