



Outdoor LED Display

SM Series

Pixel Pitch (mm) : 2.5 / 3 / 3.91 / 4 / 5 / 6.67 / 8 / 10

Cabinet Size (mm) : 768*768 / 960*960

Multiple Cabinet Materials

The SM Series offers a wide range of cabinet options including die-cast aluminum, aluminum profiles, and iron, ensuring flexibility to meet different project requirements.



High Brightness

Featuring high brightness levels, the display intelligently adjusts its brightness according to the surrounding environment for optimal visibility at all times.



Outdoor Waterproof Protection

With an IP65 rating, the SM Series provides reliable waterproof and dustproof performance, making it highly durable in various outdoor conditions.



Seamless Splicing

Advanced design guarantees smooth, seamless splicing between modules, delivering a uniform and uninterrupted viewing experience.



Efficient Heat Dissipation

Innovative structural design and materials ensure efficient heat dissipation, maintaining stable performance and extending product lifespan.



High Refresh Rate & High Grayscale

Equipped with high refresh rate and grayscale technology, the display delivers vivid, stable, and detailed visuals without flickering.



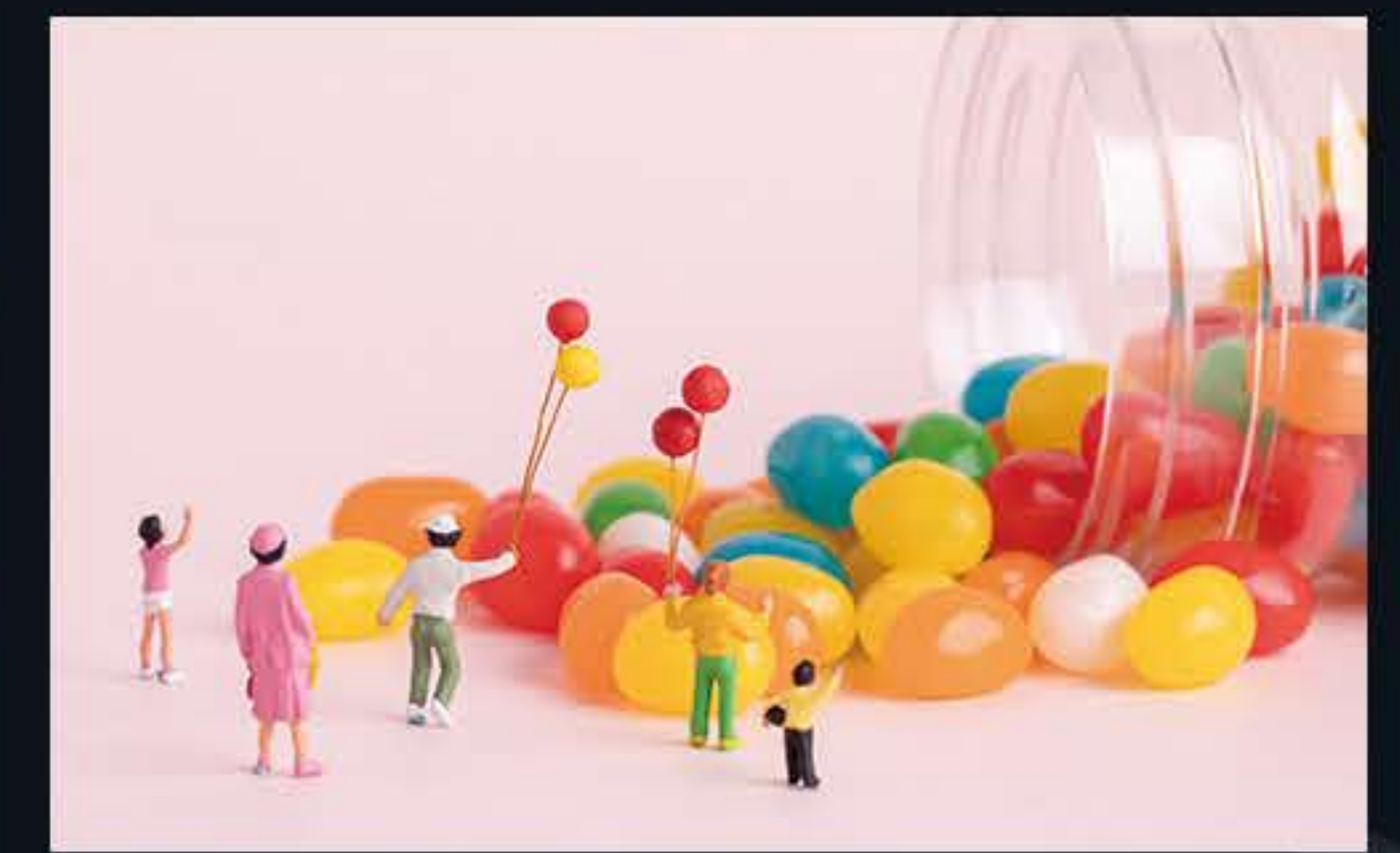
Low Refresh Rate



High Refresh Rate



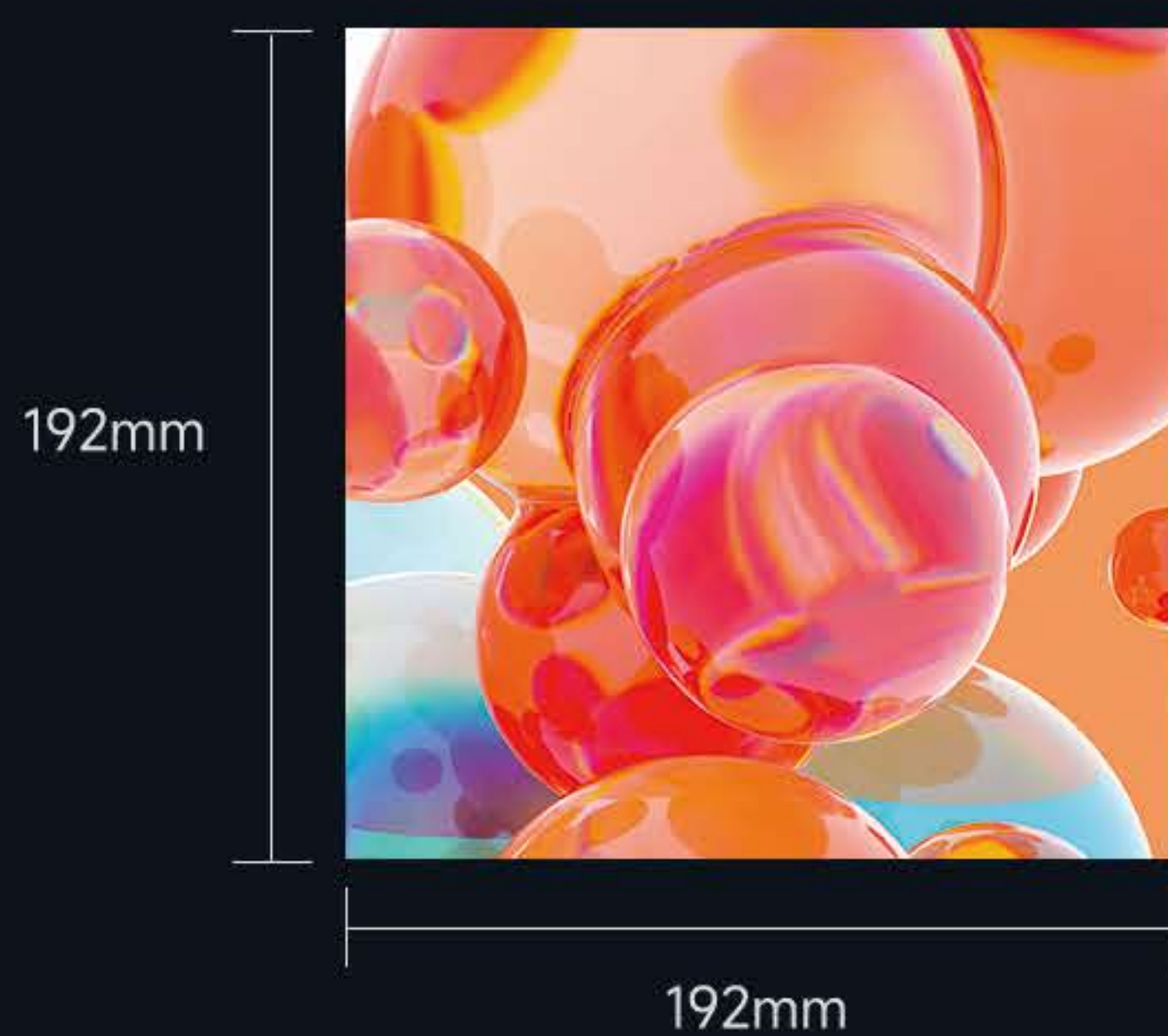
Low Grayscale



High Grayscale

Customizable Dimensions

Available in 192×192mm, 256×128mm, 320×160mm, and other module sizes, with cabinet dimensions fully customizable to fit diverse installation needs.



192mm



128mm

256mm



160mm

320mm

Application Scenarios

Ideal for outdoor advertising, sports stadiums, transportation hubs, commercial plazas, and landmark installations, the SM Series brings powerful visual impact to any environment.



Parameters

Items	SM25	SM3	SM3076	SM4	SM5	SM6	SM667	SM8	SM10
Pixel Pitch (mm)	2.5	3	3.076	4	5	6	6.67	8	10
Pixel Composition	1R1G1B								
LED Type	SMD1415	SMD1415	SMD1415	SMD1921	SMD1921	SMD2727 / SMD3535	SMD3535	SMD3535	SMD3535
Pixel Density (pixels/m ²)	160,000	111,111	105,625	62,500	40,000	27,777	22,500	15,625	10,000
Module Resolution (W×H)	128×64	64×64	104×52	64×32 / 80×40	64×32	32×32	48×24	32×16 / 40×20	32×16
Module Size (W×H)	320×160	192×192	320×160	256×128 / 320×160	320×160	192×192	320×160	256×128 / 320×160	320×160
Scan Mode	1/16	1/16	1/13	1/13 , 1/10	1/8	1/8	1/6	1/4 , 1/5	1/4
Refresh Rate (Hz)	≥1,920/3,840	≥1,920/7,680	≥1,920/3,840	≥1,920/7,680	≥1,920/7,680	≥1,920/7,680	≥1,920/7,680	≥1,920/7,680	≥1,920/7,680
Drive Type	Constant drive (IC: 2038S/1065S)			Constant drive (IC: 2037/1065S)					
Signal Interface Type	HUB75								
Brightness (nits)	≥5,500–6,500								
Protection Level	IP65								

* The specifications are for reference only. Actual parameters may vary depending on the specific model or contractual agreement.



Bring your ideas into reality

MileStrong Headquarters & Showroom

4/F, Building B15, Phase II, Xincheng Chuangzhi Industrial Park, No. 456 Heping Road, Furong District, Changsha, Hunan, China

Shenzhen MileStrong Conventional Display Division

Building 4, Yinjin Technology Industrial Park, Fengjing South Road, Hewan Community, Matian Subdistrict, Guangming District, Shenzhen, Guangdong, China

Shenzhen MileStrong XR/Immersive Display Division

3/F, Building 5, Xinlianhe Industrial Park, Bao'an District, Shenzhen, Guangdong, China

Shenzhen MileStrong Transparent Display Division

3/F, Tianyou Building, Yuekang Road, Bao'an District, Shenzhen, Guangdong, China

Shenzhen Milestrong Technology Co., Ltd.



Website



WhatsApp



WeChat



TikTok



YouTube